



Asset Monitoring & Tracking



Asset Monitoring

Are you monitoring your assets intelligently?

Do you have an asset protection partner that uses real time footage to monitor your fleet?

With all our systems being live, updating in real time, we give you the tools to keep your finger on the pulse of your business from the palm of your hand.

All systems run live with a 1GB data line and a 256GB SSD to give up to 90 days of footage. Systems can be installed on all types of vehicles and ranges from 2ch up to 8ch.

From small motor vehicles to large delivery trucks, we help you have eyes on your assets anywhere anytime.

Live Video Monitoring:

We use a wide range of mobile video recorders manufactured for purpose.

- GPS Supported
- WIFI Supported
- 4G Compatible
- SD Card Units
- HDD Units
- 1080P quality

Advantages of Camera Surveillance

- Increased daily revenue
- Monitoring Diesel Tanks
- Driver and passenger safety
- Accident reconstruction
- Monitor cell phone use while driving
- Driver training
- Reduce insurance premiums
- Speed up insurance claims
- 24/7 Eyes on assets from your phone

With real-time monitoring, detailed route histories, immediate alerts and the ability to access a full online history of everywhere your fleet has been.

We have the complete fleet management and vehicle tracking solution for you to access from anywhere in the world via our website and mobile app.

Live Tracking

Our tracking system have been developed specifically to solve problems in the asset and fleet monitoring industry. It will allow you to see your vehicle as it drives, with a real-time digital map interface. Know exactly where your vehicles are at any given moment.



Fuel Security

We use Anti-Siphon Devices fitted to your assets.

Shield

- Attack proof 4cm solid dome base
- Prevents siphoning with narrow gauge pipes
- Short chamber reduces skimming
- Fills at 120L per Minute

Optimum

- Prevents skimming from a full tank
- 140L per Minute Filling
- Solid aluminium constriction
- Prevents siphoning from any gauge pipe
- Prevents overfilling & wastage

Fuel Tank Monitoring

Are you constantly worrying about your fuel spend and where it's going? Fuel can take up as much as 50% of all direct cost to your fleet based business.

With our fuel management system you are able to pin point exactly where fillings and drainages on your tank occur.

- Delivers information in real time
- Results are highly accurate and therefore very reliable
- The sensor forwards information on the fuel level and refueling events or drains at any given moment in time.
- Be proactive in a case where fuel is being stolen





24-Hour Service

**AFFORDABLE & EFFICIENT TRACKING
SOLUTIONS IN REAL TIME
24 HOURS A DAY**



AHD SD card Mobile DVR M20

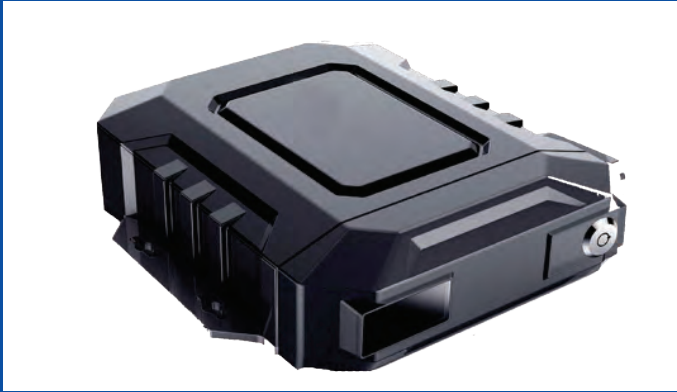
The MV Series video recorders are DVRs specifically designed for use on board mobile vehicles, such as cars, trucks, aircraft and boats . In particular, casing, terminals and memory slots are designed to bear strong vibrations and extreme climatic conditions.



AHD 4CH Mini SD card Mobile DVR M10H

M10H is a cost-effective H.264 SD Card Mobile DVR specially designed for vehicle surveillance application. Its mini size is suitable for small space deployment.

It adopts high speed processor hardware and embedded Linux system. The mini mobile DVR has robust hardware for anti-shock and rich functions with simple deploy and reliable work.



AHD 4CH HDD Mobile DVR M32

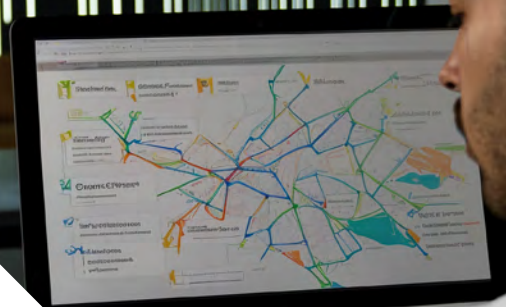
M32 is a professional HD H.264 mobile digital video recorder specially designed for vehicle surveillance purpose. It adopts high speed processor hardware and embedded Linux system. The state of the art mobile DVR use the latest IT technologies, such as H.264 code, data flow streaming, A/V noise reduction module-style design, anti-vibration technology, wide-range voltage design. It has robust hardware for anit-shock and rich interfaces.



AHD 6CH HDD Mobile DVR PA-M52A

M52A is a cost-effective and high extendibility MDVR, developed especially for vehicle monitoring and remote video surveillance. It adopts high speed processor and embedded Linux system, combined with the most advanced technology of H.265 coding/decoding, 3G/4G network, GPS/BD and WIFI. It supports 1080p, 720p, D1 resoluion video recording. The device has built-in ADAS and DSM module, which can recognize driver fatigue, phone use, smoking, lane departure and other warnings.





Get in Touch

DANIE BOOYENS

MANAGING DIRECTOR

+27 71 212 5715

danie@dcii-hawkrisk.co.za

www.dcii-hawkrisk.co.za